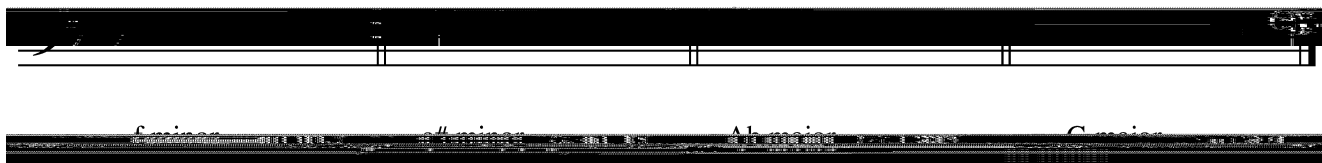
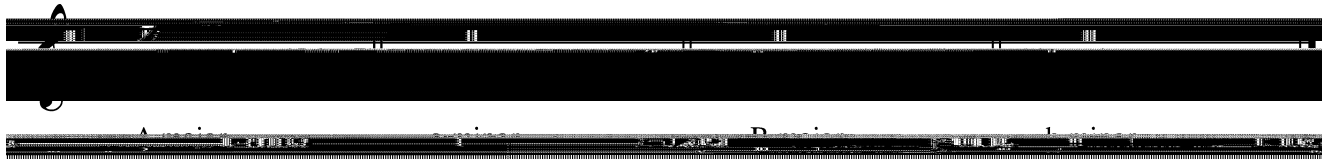


M C EORY A E MEN

PAR , R EN LL

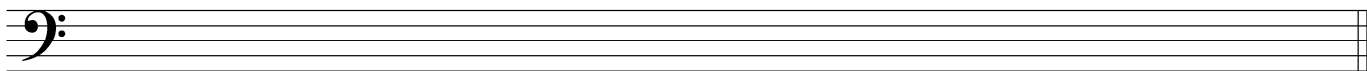
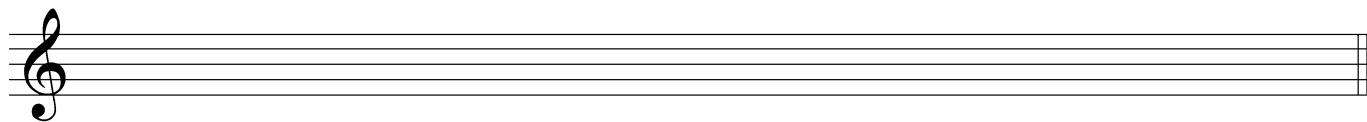
EY NA RE

1. Write the correct key signature for each of the following major and minor keys.



CALE

2. Write these scales ascending and descending. Be sure to observe clef changes.
 - (a) Using the correct key signature, write the major scale that has a key signature of three sharps;
 - (b) Using the correct key signature, write the minor scale that has a key signature of four flats, harmonic form:
 - (c) Using the correct key signature, write the minor scale that has a key signature of one sharp, melodic form.



N ER AL

3.

E EN C ORD

6. Form the seventh chords indicated on the following roots. The first is done as an example. Mm=major/minor or dominant seventh; mm=minor/minor or minor seventh.

ME ER NA RE R Y M

7. Determine the proper meter signature for each of the following rhythms. Place your answer in the blank above the staff to the right.

8. Write two complete measures of the meter indicated. Your measures should include a combination of notes and rests.

PARALLEL

1. You will hear two pitches, the first of which is gi

4. Notate the melody of the tune, *Frère Jacques*, in the key of G major. Begin with quarter notes.

